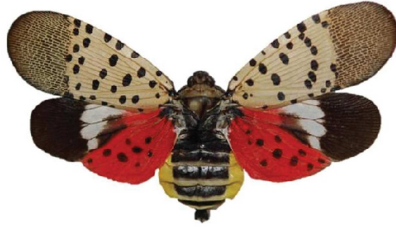


The quarantine area for #SpottedLanternfly is expanding! The expansion includes areas in Lehigh County (Whitehall, South Whitehall, Upper Saucon, Lower Milford, Allentown City) and areas in Montgomery County (Lower Pottsgrove, Upper Fredrick, Marlborough). If you're a resident of (or frequently travel to/through) these areas, here's what you need to know.

For more on the #SpottedLanternfly visit: [agriculture.pa.gov/spottedlanternfly](http://agriculture.pa.gov/spottedlanternfly)

**DO YOU LIVE OR WORK IN A QUARANTINED AREA? HERE'S WHAT YOU NEED TO KNOW:**

*Meet the Spotted Lanternfly*



*A plant hopper, the spotted lanternfly is known to utilize over 25 species in Pennsylvania and has the potential to greatly impact the grape, tree fruit, plant nursery and timber industries.*

*What do you need to do?*



*All we ask, is that you look before you leave the quarantined area. Inspect your car or other belongings that have sat outside. Look for the spotted lanternfly (or their egg masses) to avoid transporting the pest.*



[AGRICULTURE.PA.GOV/SPOTTEDLANTERNFLY](http://AGRICULTURE.PA.GOV/SPOTTEDLANTERNFLY)

Are you in the #SpottedLanternfly quarantine area? Here's how you can help! All we ask is that you look before you leave the quarantine area. Check your vehicle (or camper, truck, trailer, baggage, etc.) for insects or egg masses before travelling home or out of the area to decrease our risk for transporting to non-quarantined areas.

**look**  
*before you leave!*

[AGRICULTURE.PA.GOV/SPOTTEDLANTERNFLY](http://AGRICULTURE.PA.GOV/SPOTTEDLANTERNFLY)

The #SpottedLanternfly is a pest to grapes, hardwoods and orchards – and with your help, we can eradicate it and save our precious commodities. For more on the pest and how you can help our efforts, visit: [agriculture.pa.gov/spottedlanternfly](http://agriculture.pa.gov/spottedlanternfly)



**SAVE PENNSYLVANIA'S COMMODITIES FROM THE SPOTTED LANTERNFLY**



If you're a resident in a #SpottedLanternfly quarantined area, here's a checklist of things to check before moving outdoor items from within the quarantine. Do your part; help us keep this pest from spreading: <http://bit.ly/2dUXDhp>

All we ask of residents in the #SpottedLanternfly quarantine areas is to #LookBeforeYouLeave! Check your car, bike, camper, RV, tent (anything that's spent some time outside in the area) before you travel outside of the quarantine.